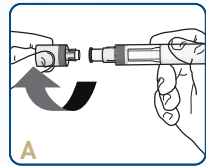
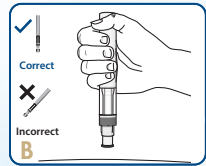


## WHAT TO REMEMBER WHEN INJECTING

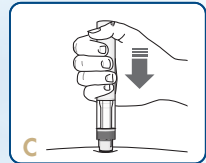
Before you begin, ensure you have read all of the Patient Information Leaflet supplied with your Erelzi® SensoReady® pre-filled pen.<sup>1</sup> Before injecting, wash your hands well with soap and water.<sup>1</sup> Using a circular motion, clean the injection site with an alcohol wipe.<sup>1</sup> Leave it to dry before injecting.<sup>1</sup> Do not touch the cleaned area before injecting.<sup>1</sup> Only remove the cap when you are ready to use the pen.<sup>1</sup>



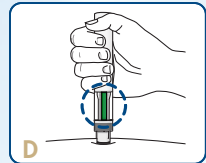
- Twist off the cap in the direction of the arrows<sup>1</sup> (see Figure A)
- Once removed, throw away the cap.<sup>1</sup> **Do not try to re-attach the cap<sup>1</sup>**
- Use the pen within 5 minutes of removing the cap<sup>1</sup>



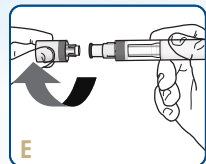
- Hold the pen at **90°** to the cleaned injection site<sup>1</sup> (see Figure B)
- During injection you will hear 2 clicks<sup>1</sup>
  - First click: the injection has **started<sup>1</sup>**
  - Second click: the injection is **almost finished<sup>1</sup>**



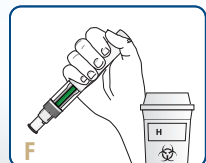
- Press the pen firmly against the skin to start the injection<sup>1</sup>
  - **The first click** indicates the injection has started<sup>1</sup>
  - Keep holding the pen firmly against your skin (see Figure C)<sup>1</sup>
  - The **green indicator** shows the progress of the injection<sup>1</sup>



- Listen for the second click.<sup>1</sup> This indicates the injection is almost complete<sup>1</sup> (see Figure D)
- Check that the **green indicator** fills the window and has stopped moving<sup>1</sup>
- The pen can now be removed<sup>1</sup>



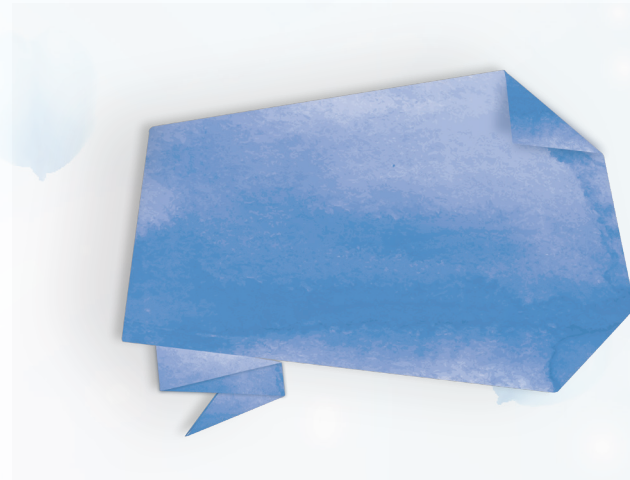
- After injection, check that the green indicator fills the window<sup>1</sup> (see Figure E). This means the medicine has been delivered.<sup>1</sup> Contact your doctor if the green indicator is not visible<sup>1</sup>
- There may be a small amount of blood at the injection site.<sup>1</sup> You can press a cotton ball or gauze onto the injection site and hold it for 10 seconds.<sup>1</sup> Do not rub the injection site.<sup>1</sup> You may cover the injection site with a small adhesive bandage, if needed<sup>1</sup>



- Dispose of the used pen in a sharps container (see Figure F).<sup>1</sup> For your safety and health and that of others, pens must never be re-used<sup>1</sup>
- Do not throw away any medicines via wastewater or household waste.<sup>1</sup> Ask your doctor or pharmacist how to throw away medicines you no longer use<sup>1</sup>
- Any unused product or waste material should be disposed of in accordance with local requirements

## YOU ARE NOT ALONE

For more information and support please contact your healthcare provider and/or patient support nurse. You can also email Sandoz at [medical.za@sandoz.com](mailto:medical.za@sandoz.com)



# SANDOZ

## ERELZI® (ETANERCEPT) SENSOREADY® PRE-FILLED PEN

### SELF-INJECTION GUIDE

FOR PATIENTS WHO HAVE BEEN PRESCRIBED ERELZI®



# SANDOZ

**Reference: 1.** Sandoz SA (Pty) Ltd. ERELZI® Patient information leaflet. V2.0 (15/11/2021), approved 26 January 2022.

**[S4]** ERELZI® 25 mg (solution for injection). Reg. No.: 55/3.1/0392. Composition: Each pre-filled syringe contains 25 mg etanercept. **[S4]** ERELZI® 50 mg (solution for injection). Reg. No.: 55/3.1/0393. Composition: Each pre-filled syringe/pen contains 50 mg etanercept. Pharmacological Classification: A3.1 Anti-rheumatics (anti-inflammatory agents). For full prescribing information refer to the Sandoz Professional Information approved by the South African Health Products Regulatory Authority (SAHPRA).

Sandoz SA (Pty) Ltd, Reg. No. 1990/001979/07, Magwa Crescent West, Waterfall City, Jukskei View, Midrand, 2090.  
Tel: +27 (11) 347 6600. SANCAL Customer Call Centre: 0861 726 225. Reporting of AEs via the link:  
<https://pvi1j.solutions.iqvia.com> or the e-mail address, [adverse.event.sac@sandoz.com](mailto:adverse.event.sac@sandoz.com) ZA2407229647

## INJECTING WITH THE ERELZI<sup>®</sup> SENSOREADY<sup>®</sup> PEN

It is important not to try and inject yourself until you have been trained by your doctor, nurse or pharmacist.<sup>1</sup>

Read these instructions **before** injecting, as well as the Patient Information Leaflet provided with Erelzi<sup>®</sup>.<sup>1</sup> They will help you to inject correctly using the Erelzi<sup>®</sup> SensoReady<sup>®</sup> pen.<sup>1</sup>



The Erelzi<sup>®</sup> pre-filled pen is shown here with the cap removed.<sup>1</sup>

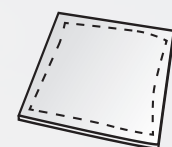
### It is important that you:

- **Do not remove** the cap until you are ready to inject<sup>1</sup>
- Store the pen in a refrigerator between 2°C and 8°C<sup>1</sup>
- Take the pen out of the refrigerator 15 to 30 minutes before injecting<sup>1</sup>
- **Do not freeze** or shake the pen<sup>1</sup>
- If you drop your pen, **do not use** it if it looks damaged, or if you dropped it with the cap removed<sup>1</sup>
- Throw the pen away straight after use.<sup>1</sup> Do not throw away the used pen with your household waste.<sup>1</sup> **Do not re-use the pen**<sup>1</sup>

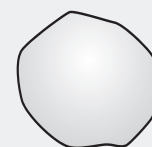
## WHAT YOU NEED



A new and unused Erelzi<sup>®</sup> SensoReady<sup>®</sup> pen



Alcohol swab  
(not included)



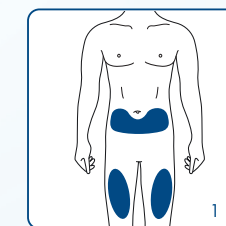
Cotton ball or gauze  
(not included)



Sharps disposal  
container  
(not included)

## WHERE TO INJECT

- The recommended injection site is the front of your thighs.<sup>1</sup> You may also use the lower abdomen, but not the area 5 cm around your navel (belly button)<sup>1</sup>
- Choose a different site each time you give yourself an injection<sup>1</sup>
- Do not inject into areas where the skin is tender, bruised, red, scaly or hard.<sup>1</sup> Avoid areas with scars or stretch marks<sup>1</sup>
- If you have psoriasis, you should **NOT** inject directly into any raised, thick, red or scaly skin patches or lesions (psoriasis skin lesions)<sup>1</sup>



### Before injecting:

- For a more comfortable injection, take your pen out of the refrigerator 15 to 30 minutes before injecting Erelzi<sup>®</sup><sup>1</sup>
- Look through the viewing window.<sup>1</sup> The solution should be clear or slightly opalescent, colourless or slightly yellowish.<sup>1</sup> It may contain small white or almost transparent particles of protein.<sup>1</sup> Do not use the solution if it is discoloured, cloudy or has large lumps, flakes or coloured particles<sup>1</sup>
- Look at the expiration date (EXP) on your pen.<sup>1</sup> Do not use your pen if the expiration date has passed<sup>1</sup>
- Do not use if the safety seal has been broken<sup>1</sup>

*If any of these checks fail, please contact your pharmacist.<sup>1</sup>*